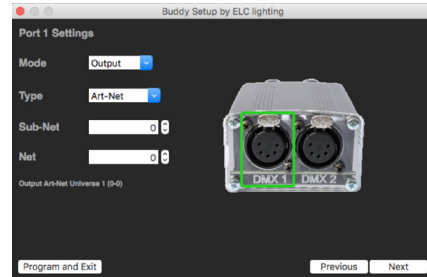


dmXLAN buddy



The ELC dmXLAN buddy provides all the functions needed to output DMX data via a laptop. Regardless of whether you are new to the industry, a professional or perhaps a student who uses simple software applications - the buddy is perfect as an entry-level product or tool. It offers ELC's proven high quality at an unbeatable price / performance ratio. The dmXLAN buddy is a 2-port DMX / Ethernet node that supports Artnet, sACN and Strand Shownet and can either be configured via ELC's very simple to use "buddy software" or with the dmXLAN software. The dmXLAN software provides many features such as configuration of the DMX ports and complex full dynamic merging of various DMX sources, as well as control of devices for testing. Furthermore, the buddy also supports RDM (Remote Device Management).

A nice additional feature is that the buddy can be used as a remote focus control. Simply Navigate to the IP address of the buddy on any Browser on a Smartphone, tablet or computer connected to the same (wifi) network. And control channels, memories or groups. This can be either directly on the Dmx output or A universe on the network with the same ID as port 1.

Features

- Power over USB port
- Supports sACN, Art-Net & Shownet
- Ports can act as input or output
- Simple programming through specific software application (Buddy Setup)
- Compatible with dmXLAN software as any ELC dmXLAN node
- The Integrated web page will convert the device into a simple DMX controller – just like the famous ELC focusHAND remote

Technical Data

- Dimensions: 90 × 65 × 40 mm
- Weight: 150 g
- Input: max. 2.5W
- Connections: 2x DMX 512 via Neutrik XLR 5-pin female, 1x Ethernet 10/100MBit via RJ45, 1x USB (for configuration and power supply)
- Controls: RGB LED Indicator, clear button
- Additionally required: external USB power supply
- To download the latest software, go to: dmxbuddy.com

Article Reference

- [buddy](#)