



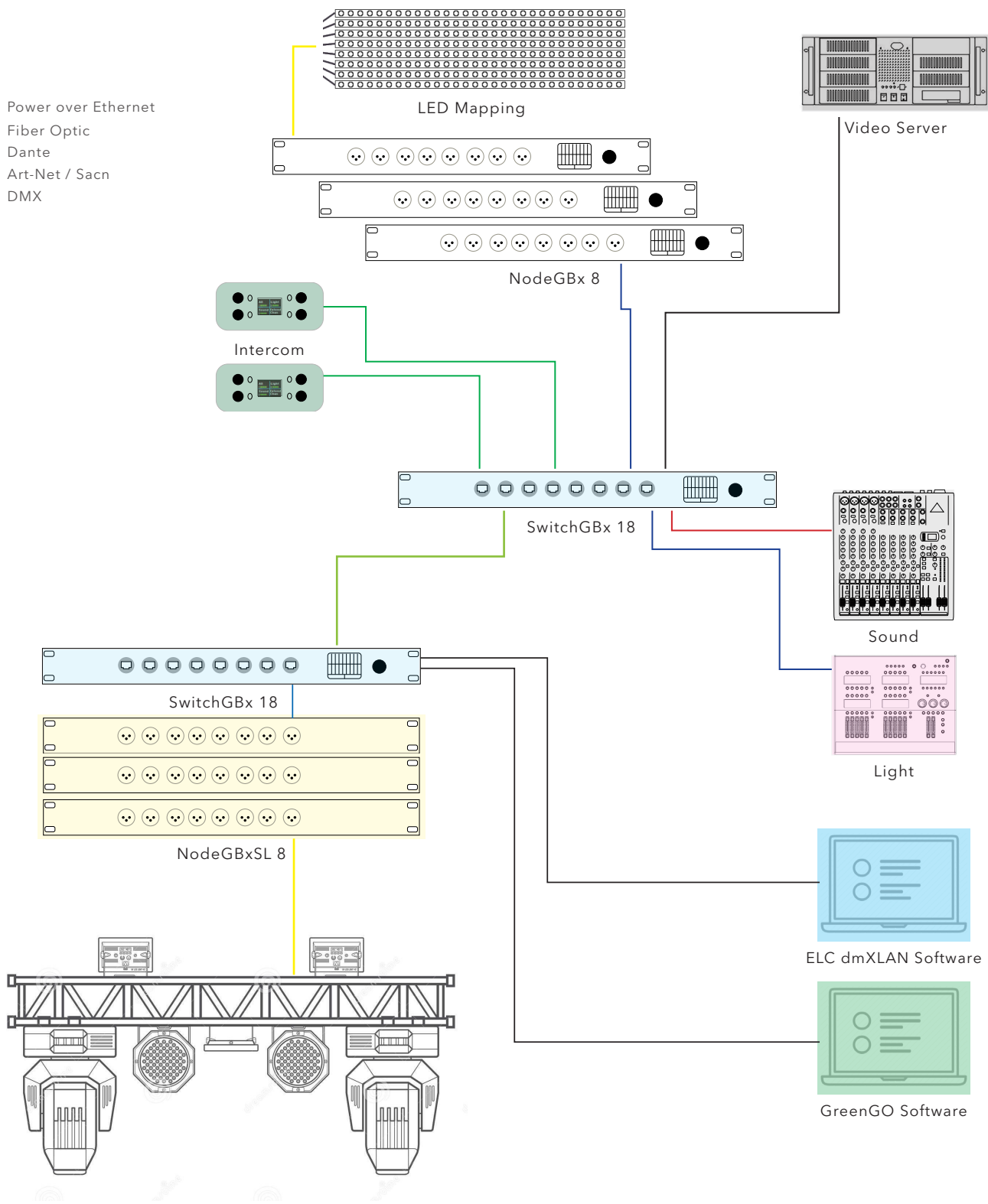
**PROFESSIONAL
LIGHTING EQUIPMENT
SOLUTIONS**

2019

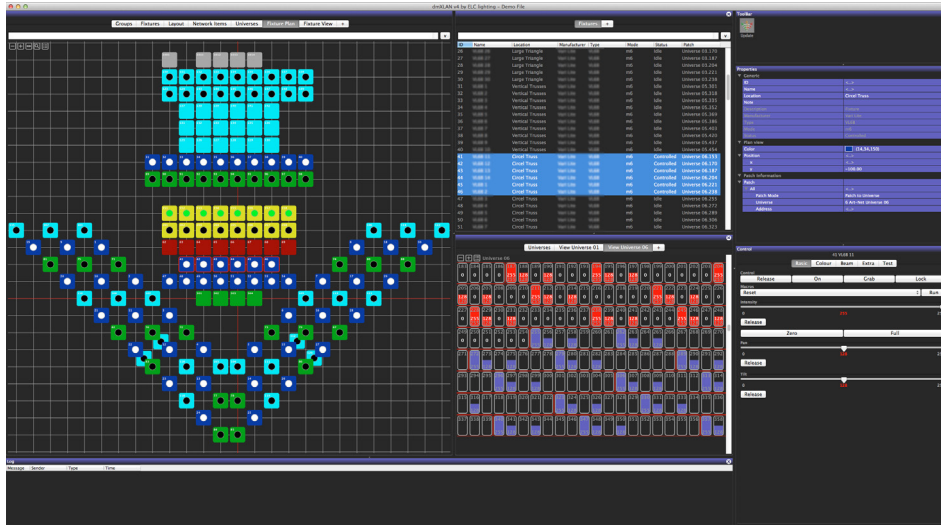
4	dmXLAN Software
5	dmXLAN node8GBx
6	dmXLAN node8GBxSL
7	dmXLAN node6X
8	dmXLAN node3
10	dmXLAN buddy & Node1
12	dmXLAN Switches
15	focusHAND 3 Remote Control
16	DMX/RDM Splitters
18	DMX ShowSTORE
20	DMX Controller Series
22	Softwares



Network Solutions



dmXLAN Software



The backbone of the ELC dmXLAN system is the free dmXLAN software. With the help of this software, the complete DMX / Ethernet network can be configured and monitored in real time. In addition, the software gives technicians of individual trades immediate access to all the parameters of the fixtures available in the lighting network. This makes it an ideal aid in setting up the lighting rig, diagnosing faults and problems, as well as rectifying any of these issues.

On Youtube you can find a playlist available explaining all the functions of dmXLAN in detail.

Features

- Universe window to display all existing DMX universes in the network.
- Network window for displaying all components registered to the network.
- Log window for viewing all network activity and alerts of abnormalities.
- Plan view for a schematic representation of network items and fixtures.
- Ability to insert bitmap files as a background.
- Control window for identifying network components, controlling fixtures.
- Fixture window for inserting moving lights or other devices for maintenance or control purposes.
- Control of device parameters of moving lights (e.g. for service technicians for maintenance)
- Display of DMX universes
- Setting of IP addresses of connected network components.
- Firmware updates for connected network components.
- Properties window for configuring the network components.
- Supports: Artnet - SCAN - Shownet - Pixel LED String

dmXLAN Node8GBx



The dmXLAN node8GBx DMX / Ethernet Node comes with an integrated dual GBit ports and colour sensitive display. It offers 8 bidirectional, optically isolated, 5-pin XLR female connectors on the front panel, which can be used as DMX outputs, DMX inputs or DMX outputs with RDM. The two Gigabit Ethercon ports are located on the rear of the unit.

All 5pin XLR outputs now provide active DMX signal monitoring and have an RGB status LED that quickly and easily informs the user about the current status of each port. In addition, errors or changes in the DMX signal are displayed on the integrated display or in the dmXLAN software.

All DMX ports are full isolated (FI).

The dmXLAN node8GBx is fully compatible with the free dmXLAN software. This allows, as an example merging into HTP or Priority, as well as a softpatch function. Device parameters can also be operated remotely from here. Visualisation solutions such as e.g. WYSIWYG, ESP Vision, or Capture are also supported.

Features

- Active output measurement
- RGB LED for every DMX port
- 8 Bi-directional DMX ports on the front panel, RDM compatible
- Supports sACN, Art-Net & Shownet
- Special support of Pixel LED string protocols
- Remote programming and monitoring and fixture parameter override
- DMX Input normal or backup
- DMX Output normal, HTP, Priority merging, Softpatch (channel by channel), programmable merging with DMX channel control
- Local control via color TFT display, rotary encoder/selector pushbutton
- Support for WYSIWYG, ESP, Capture

Technical Data

- Power Supply: 100 - 240VAC, 50 - 60Hz, max. 10VA.
- 8x bidirectional full isolated DMX connections via XLR 5-pin Socket
- Powercon True1 in-outlet
- 2x Neutrik RJ45 Ethercon chassis
- Dimensions: 483 × 150 × 44 mm
- Weight: 2 kg

Article Reference

- DLN8GBX

dmXLAN Node8GBxSL



ELC Lighting Introduces a New Concept in Signal Distribution.

The node8GBxSL is part of the ELC GBX Distribution System, of which the dmXLAN switch (GBx10 or GBx18) is the backbone. This switch is the master, and up to 15 slave units can be daisy chained via the Ethernet ports. The system supports all open protocols including sACN, Art-Net and ShowNET.

The node8GBxSL is designed solely for use as a slave to the dmXLAN switch GBx 10 or dmXLAN switchGBx 18. The DMX ports can be configured via the user interface of the switch or with the dmXLAN software. A maximum of 15 node8GBxSL slave units can be connected to the switch, the result is a system rack with 120 fully programmable DMX/RDM ports..

Features

- Active output measurement
- RGB LED for every DMX port
- 8 Bi-directional DMX ports on the front panel, RDM compatible
- Supports sACN, Art-Net & Shownet
- Special support of Pixel LED string protocols
- Remote programming and monitoring and fixture parameter override
- DMX Input normal or backup
- DMX Output normal, HTP, Priority merging, Softpatch (channel by channel), programmable merging with DMX channel control
- Support for WYSIWYG, ESP, Capture

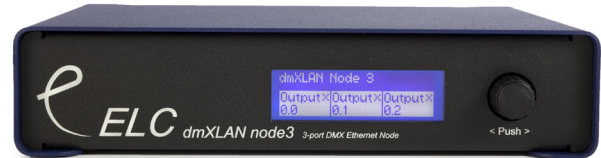
Technical Data

- Power Supply: 100-240VAC, 50-60Hz, max. 10VA.
- 8x bidirectional full isolated DMX connections via XLR 5-pin Socket
- Powercon True1 in-outlet
- 2x Neutrik RJ45 Ethercon
- Dimensions: 483 x 150 x 44 mm
- Weight: 2 kg

Article Reference

- DLN8GBXSL

dmXLAN Node3



The node3 is a DMX / network node with three DMX (input or output via 5-pin XLR) and two network ports. Programming is easily achieved with the help of the free dmXLAN software or via the LCD display. There are five versions to choose from.

Product Description

3 DMX connections which are independent of the hardware and individually configurable as input or output. Two network ports that can be used at the same time as they are connected via an internal switch. The second network connection is used to integrate an external device, such as a PC or lighting console. DMX input options are available in either Normal or Backup mode. DMX output options such as Normal, HTP or Priority Switching and Softpatch are available. Takeover of device functions (for example for service technicians). Supports input for visualization software such as WYSIWYG, ESP, Capture and many others.

All DMX ports are fully isolated*. The Node3 is available with Power over Ethernet.

*FI versions, standard since 11.2019

Surface Mount

The device is designed for surface mounting and has 3 DMX ports and a network connection on the front panel. The second Ethernet port is an internal RJ45 connector.

Article Reference: DLN3S

Truss Mount

The sturdy touring case is equipped with an integrated M10 thread and a locking eye for quick and secure truss mounting. 19" mounting brackets also allow installation in a rack. On the front panel there is an LCD display and an encoder for configuration. There are two Ethercon network connections and three DMX ports on the back.

Article Reference: DLN3T / DLN3TPoE



Recess Wall Mount

The device is designed for recess wall mounting and has 3 DMX ports and a network connection on the front panel. The second Ethernet port is an internal RJ45 connector.

Article Reference: DLN3W

DIN

The node3 DIN is a DMX / network node contained a top-hat rail housing for installation in a control cabinet. It features three DMX connections (input or output) via screw terminals and two network ports via RJ45. Programming is easily achieved with the help of the free dmXLAN software

Article Reference: DLN3DIN

Features:

Recess Wall Mount

- Dimensions: 140 × 87 × 52 mm
- Power is supplied via Power over Ethernet (PoE)
- Weight: 560g

Surface Mount

- Dimensions of the front panel: 162 × 115mm
- Dimensions: 111 × 75 mm
- Hole Spacing (Middle): 92 × 83.5 mm
- Power is supplied via Power over Ethernet (PoE)

Truss Mount

- The unit can be powered via the built-in universal power supply from 100 - 240VAC or via the network cable or POE versions
- Dimensions: 200 × 150 × 44 mm
- Weight: 1.5 kg

DIN

- 3 DMX ports via screw terminals can be configured as input or output
- Two network ports via RJ45 plug-in contacts that can be used at the same time as they are connected via an internal switch
- Power supply: via screw terminals with external power supply 9-24V DC (not included) or PoE
- Control: LEDs for power, DMX 1, 2, 3 and network link
- Dimensions: 105 × 85 × 60 mm
- Weight: 0.2 kg

dmXLAN node1 mkII



The node1 mkII is a surface mountable DMX / network node with DMX (input or output via 5-pin XLR) and network connection (Ethercon). Power is also supplied via the unit's Ethernet connection via PoE (Power over Ethernet). Programming is completed via the free ELC dmXLAN software.

1 DMX connection (independent of the hardware, configurable as input or output). 10 / 100mBit network connection via Ethercon with PoE for power supply. Supports input for visualization software like WYSIWYG, ESP, Capture and many others.

Technical Data

Node1

- DMX OUT or IN via XLR 5 or XLR 3
- Dimensions: 85 × 75 × 45 mm
- Power Supply via POE or external
- Weight: 300 g

Node1DIN

- DMX OUT or IN via screw terminal (configurable via dmXLAN software)
- Network connection via RJ45
- Power Supply via POE or external 12VDC via screw terminals
- Status LED for LAN and DMX
- Dimensions: 3U, 53 × 90 × 58 mm
- Weight: 90 g

Article Reference

- DLN1 S/F
- DLN1 DIN

dmXLAN buddy



The ELC dmXLAN buddy provides all the functions needed to output DMX data via a laptop. Regardless of whether you are new to the industry, a professional or perhaps a student who uses simple software applications - the buddy is perfect as an entry-level product or tool. It offers ELC's proven high quality at an unbeatable price / performance ratio. The dmXLAN buddy is a 2-port DMX / Ethernet node that supports Artnet, sACN and Strand Shownet and can either be configured via ELC's very simple to use "buddy software" or with the dmXLAN software. The dmXLAN software provides many features such as configuration of the DMX ports and complex full dynamic merging of various DMX sources, as well as control of devices for testing. Furthermore, the buddy also supports RDM (Remote Device Management).

A nice additional feature is that the buddy can be used as a remote focus control. Simply Navigate to the IP address of the buddy on any Browser on a Smartphone, tablet or computer connected to the same (wifi) network. And control channels, memories or groups. This can be either directly on the Dmx output or A universe on the network with the same ID as port 1.

Features

- Power over USB port
- Supports sACN, Art-Net & Shownet
- Ports can act as input or output
- Simple programming through specific software application (Buddy Setup)
- Compatible with dmXLAN software as any ELC dmXLAN node
- The Integrated web page will convert the device into a simple DMX controller – just like the famous ELC focusHAND remote

Technical Data

- Dimensions: 90 × 65 × 40 mm
- Weight: 150 g
- Input: max. 2.5W
- Connections: 2x DMX 512 via Neutrik XLR 5-pin female, 1x Ethernet 10/100MBit via RJ45, 1x USB (for configuration and power supply)
- Controls: RGB LED Indicator, clear button
- Additionally required: external USB power supply
- To download the latest software, go to: dmxbuddy.com

Article Reference

- [buddy](#)

dmXLAN Switch GBx18



The dmXLAN switch GBx 18 is a programmable gigabit switch (10/100/1000). It has been designed specifically to meet the needs of events to reliably handle the high volumes of data used in light (e.g. Art-Net), sound (e.g. DANTE), and video protocols.

The configuration of virtual networks (VLAN), redundant network links and trunks can be easily and simply achieved by means of the integrated color screen or the free software dmXLAN.

The GBx18 has eight Gigabit Ethercon ports with PoE (IEEE 802.3af-2003) on the front. The back panel features eight Gigabit Ethercon ports with no PoE and 2 SFP+ Cages with a data rate up to 2.5 Gbit for SFP+ fiber modules.

The GBx18OPT has 2 Neutric Opticalcon Duo MM connectors on the front instead of the 2 SFP+ cages on the back. The GBx18FF has 2 FiberFox MM connectors on the front instead of the 2 SFP+ cages on the back.

The dmXLAN switch GBx 18 can act as master for the ELC node8GBxSL.

Features

- Real-time backup loops
- Local control via colour screen and rotary encoder
- 8 × 1Gbps Network Ports with PoE (802.3af-2003 Standard) on the front with RGB LED
- 8 × 1Gbps Network Ports on the rear
- Supported by dmXLAN software
- Partition of the network into separate VLANs
- DANTE Compatible
- Can act as master for the dmXLAN nodeGBxSL 8

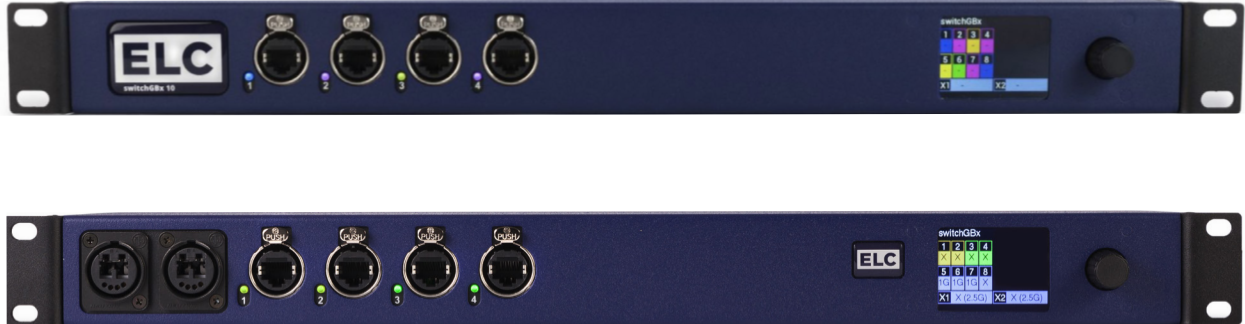
Technical Data

- Dimensions: 19" × 1U x165mm
- Weight: 2,85 Kg
- Power: 100-240VAC, 50 - 60Hz, Switched PSU on Powercon True1
- Consumption: max 120W
- Heat dissipation: max 10W
- Connections: 16x Neutrik RJ45 Ethercon, 1x Powercon True1 inlet-outlet, 2x SFP cages
- Controls: TFT multicolor display and rotary encoder/pushbutton for setup menu selection

Item Number

- SW18GBX
- SW18GBXOPT
- SW18GBXFF

dmXLAN Switch GBx10



The dmXLAN switch GBx 10 is a programmable gigabit switch (10/100/1000). It has been designed specifically to meet the needs of events to reliably handle the high volumes of data used in light (e.g. Art-Net), sound (e.g. DANTE), and video protocols.

The configuration of virtual networks (VLAN), redundant network links and trunks can be easily and simply achieved by means of the integrated color screen or the free software dmXLAN.

The GBx10 has four Gigabit Ethercon ports with PoE (IEEE 802.3af-2003) on the front. The back panel features four Gigabit Ethercon ports with no PoE and 2 SFP+ Cages with a data rate up to 2.5 Gbit for SFP+ fiber modules.

The GBx10OPT has 2 Neutric Opticalcon Duo MM connectors on the front instead of the 2 SFP+ cages on the back. The GBx10FF has 2 FiberFox MM connectors on the front instead of the 2 SFP+ cages on the back.

The dmXLAN switch GBx 10 can act as master for the ELC node8GBxSL.

Features

- Real-time backup loops
- Local colour screen and rotary encoder
- 4 × 1Gbps Network Ports with PoE (802.3af-2003 Standard) on the front with RGB LED
- 4 × 1Gbps Network Ports on the rear
- Supported by dmXLAN software
- Partition of the network into separate VLANs
- Can act as master for the dmXLAN nodeGBxSL 8

Technical Data

- Dimensions: 19" × 1U × 165mm
- Weight: 2,45Kg
- Power: 100-240VAC, 50 - 50Hz, Switched PSU on PowerconTrue1
- Consumption: max 60W
- Heat dissipation: max 10W
- Connections: 8 × Neutrik RJ45 Ethercon , 2 × Powercon True1, 2 × SFP cages
- Controls: TFT multicolor display and rotary encoder/pushbutton for setup menu selection

Item Number

- SW10GBX
- SW10GBXOPT
- SW10GBXFF

dmXLAN Switch5



The switch5 is a 5-port Truss-mount Ethernet switch for professional use. The sturdy touring case is equipped with an integrated M10 thread and a locking eye for quick and secure truss mounting. Five LEDs provide information about link and data presence. The switch5 offers 5 x 10 / 100BaseT Neutrik Ethercon with 4 of them PoE.

Self-powered by a universal power supply for 85 to 264V voltage with a fixed cable, it is able to supply 4 PoE ports according to IEEE 802.3af.

Features

- 19" Rack mounting with optional accessory brackets
- 5 Ethernet 10/100Mbit ports at front
- Truss mounted using M10 beneath, or desktop mounted
- Power Over Ethernet supplied on four ports (802.3af-2003 standard)
- No fans - completely silent

Technical Data

- Connections: 1 x 10/100Mbit Ethernet
- Ethercon (uplink)
- 4 x 10/100Mbit Ethernet ports
- Ethercon with PoE
- Indicators Green LED: Power on. Yellow LED per port: port active
- Dimensions: 200 x 150 x 44 mm
- Power: 100-240VAC 50/60Hz

Item Number

- DLS5PoE

FocusHand 3



This wireless, intelligent DMX-512 remote control allows the user to illuminate a fixture without having to turn on the lighting desk, making it the ideal partner for theatre, museums, schools and event venues. The device operates in the license-free frequency range of UHF 433 MHz. With its range of about 75m in buildings and 200 m outdoors, it removed the necessity for a second user to check fixtures are operating.

The simultaneous control of one or more DMX channels, 50 storable groups and 51 storable scenes as well as a channel level control of 0-100% ensures full freedom of work-flow. The focusHand 3 is installed between the lighting control panel and the dimmer unit and can remain there permanently. In standby mode, it forwards all signals from the console unchanged. In control mode, it takes over the function of the console, whereby the light control desk can be used by the built-Merger.

Features

- 50 Recordable cue states
- Merged DMX input from the lighting desk
- Individual channels and groups can be addressed and stored
- May be used without the main lighting desk being active
- Provides remote control and backup desk functionality
- Range: 75m (internal venue) 200m (open space)

Receiver Technical Data

- Built-in power supply 100-240VAC, 10VA max
- 5-pin XLR male (Input) und female (Output)
- Dimensions: 200 × 150 × 44 mm
- Weight: 1.4 kg

Transmitter Technical Data

- UHF 433,92 MHz, 10mW max
- 16 illuminated buttons
- Dimensions: 115 × 65 × 20 mm
- Weight: 280 g
- Power Supply: 9V Block

Item Number

- FHS3

DMX Splitter DT2210



The DT2210 is a 19" rackmount DMX splitter supporting the bidirectional extension to the DMX protocol to accommodate Remote Device Management (RDM).

The DT2210 is used in larger DMX networks where more than simple daisy-chain connections between multiple DMX devices (to a maximum of 32 devices) are needed. DT2210 splitter (hub) boosts the signal to create a 'star' network of 10 additional DMX lines from a choice of two DMX inputs. Outputs are grouped in pairs that can be selected to input A or B by pressing the adjacent panel push button. .

Features

- RDM compatible
- 2 DMX inputs on the rear optically isolated
- 10 outputs fully isolated on the front
- switched in pairs of two with a A/B switch between inputs
- USB port for software updates,

Technical Data

- Connections: 2 × XLR5 (M) DMX-In, 2 × XLR5 (F) DMX-Thru
- Controls: push-button for setup A or B selection
- Dimensions: 19" × 1U x165mm
- Weight: 2.5kg
- Power: 100-240VAC, fixed mains cord

Item Number

DT2210FI

DMX Splitter DT125



The DT125 is a versatile desktop or truss mounted DMX splitter supporting the bidirectional extension to the DMX protocol to accommodate Remote Device Management (RDM).

The DT125 is used in DMX networks where more than a simple daisy-chain connection between DMX devices (to a maximum of 32 devices) is needed. DT125 splitter (or hub) boosts the signal to create a 'star' network of 5 additional DMX lines from a single DMX input.

Features

- Remote Device Management (RDM) compatible
- Truss mounted using M10 beneath, or desktop mounted
- All DMX/RDM outputs are boosted signals (connect up to 32 devices per output)
- Optocoupler isolation for input, full isolation available as option
- Bi-colour LED confirms valid DMX signal
- USB connection for firmware updates

Technical Data

- 1 DMX input with an additional, optically isolated "Thru-Out"
- 5 DMX outputs, RDM compatible
- DMX tester with bi-colour LED, 5-pin. or 3-pin
- Version, M10 thread and attachment point for safety cable
- Dimensions: 200 × 150 × 44 mm
- Dimensions: 105 × 85 × 60 mm (DIN)
- Weight: 1.5 kg
- Weight: 0.15 kg (DIN)
- Built-in UPS 100-240VAC
- Power supply via screw terminals with external power supply 9-24V DC (DIN) (not included)

Article number

- DT125
- DT125FI (Full Isolated)
- DT125DIN
- DT125DINFI (Full Isolated)

dmXLAN showSTORE GBx



The dmXLAN showStoreGBx is an advanced DMX recorder with the ability to record and playback DMX shows in real time.

Programmable and compatible with ELC dmXLAN software, the dmXLAN showStoreGBx can record lighting data from a maximum of 99 separate shows from the Ethernet lighting network or DMX input and subsequently replay this data via Ethernet and/or DMX output. Data for lighting changes, fades and effects distributed on up to 4 DMX universes can be recorded real-time for a maximum of 24 hours and accurately reproduced later on. This makes the ELC dmXLAN showStoreGBx the ideal device for automating large stand-alone shows with moving light effects, such as retail displays and exhibition displays.

Features

- Real-time recording and replay of up to 4 DMX universes (2048 channels) and 99 automated shows for a maximum of 24 hours
- Built-in 4 port DMX node
- Triggering using single or combined elements (including contact closures, RS232, realtime clock (with 12-month calendar), TCP/Telnet commands, SMPTE timecode, ASCII command set and DMX-In)
- USB connection for file exchange and backup (PC & Mac compatible)
- Customizable Internal webpage allows the control via a web browser.

Technical Data

- Connections: 4x Neutrik 5P DMX connectors, 1x Powercon True1 inlet-outlet, 2x Neutrik RJ45 Ethercon, 2x SUBD9 for RS-232 and GPI, USB, XLR3 for LTC time code
- Controls: TFT multicolor display and rotary encoder/pushbutton for setup menu selection
- Dimensions: 19" x 1U x 165mm
- Weight: 2.5kg
- Power: 100-240VAC Switched PSU on PowerconTrue1
- Power consumption: max 10W

Item Number

- DSSGBX

sidekick too



The sideKICK too provides a simple to use DMX scene capture and playback of 30 memories, each of which can be a single lighting state (up to 512 channels) or a chaser with individual period and crossfade times.

The desk is fitted with DMX in/out and a programmable DMX merger. It is ideal as a stand alone control, a backup desk, and it can be used to control other software applications, such as GrandMA OnPC.

Features

- Captures data from DMX data signal
- 30 memories of 512 DMX channels
- Each memory can be a scene or a chase (total desk capacity is 126 chase steps)
- Stores chaser step length and times
- Master up/down fade buttons controls lighting states from 0% to 200%
- AC612 editor freeware provides programming functions

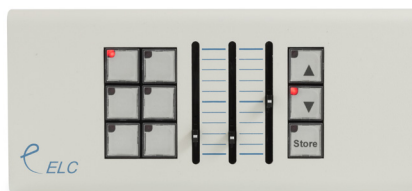
Technical Data

- Dimensions 250 × 200 × 40mm
- Weight: 1.6kg
- Power: USB
- Connections: DMX-in, DMX-out
- USB for connection to PC/Mac
- Controls: 10 faders, 30 scene/chase
- Options AC612 Editor software

Item Number

- SDK2

AC 612DMX Controllers



These small DMX controllers are ideal for architectural lighting applications, indoor lighting control, meeting rooms, restaurants and exhibitions. Discreet and compact in design, they are designed for either wall mounting (surface mounting) or to be used as a table-top device.

Fade time and the duration of each cue are separately adjustable. Master dimmer from 0% to 200%, with master speed control. Programming of cues and cuelists via externally connected DMX signal or free editor software (for Windows and Mac) via USB port. Built-in merge, with the operating modes: HTP, LTP, Priority. Master / slave operation. 512 DMX channels.

AC612 XUB

16 keys, 12 memory slots for individual cues (scenes) or cuelists (programs) with a total of 126 cues + additional blackout scene. DMX input and output via screw terminals. XUBX XLR version.

AC612 XUBF

3 faders and 6 keys, 9 memory slots for individual cues (scenes) or cuelists (programs) with a total of 126 cues. DMX input and output via screw terminals.

AC612 XUF

5 faders and 3 buttons, 5 memory slots for individual cues (scenes) or cuelists (programs) with a total of 126 cues. DMX input and output via screw terminals.

Technical Data

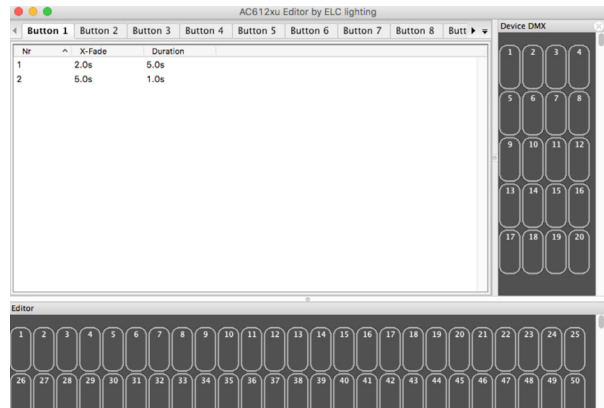
- Intended for wall mounting
- DMX input and output via screw terminals.
- External power supply (not Included), 9-24Vdc, 200mA
- Dimension: 180 x 80 x 22 mm
- Weight: 0.45 kg

Optional: XUBX - XUFX - XUBFX

- DMX-in: 5-pin XLR
- DMX-out: 5-pin XLR
- Supplied with universal USB power supply

Item Number

- XUB
- XUBF
- XUF
- XUBX
- XUFX
- XUBFX



AC612 DIN

Based on the AC612 XUB 12-memory push-button unit, this DIN-rail mounted version has contact closure terminals for each memory/chase making it ideal for system integration. A USB connection is provided for programming, and the versatile design incorporates a programmable DMX merger.

AC612 Editor

You can program the full AC612 range, including the Sidekick TOO. Every button can be assigned a scene or cue-list, with custom crossfade and duration times.

Features

- Program every button/fader
- Automated Cuelists
- Crossfade Times
- Duration Times

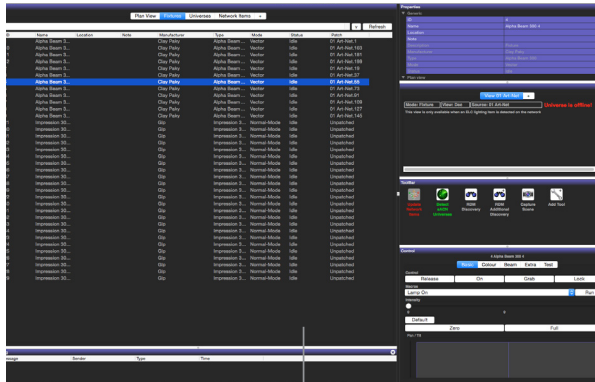
Technical Data

- Operating voltage 9-24V, 200mA (PSU not included)
- Dimensions: 105 × 85 × 60 mm
- Weight: 0.15 kg

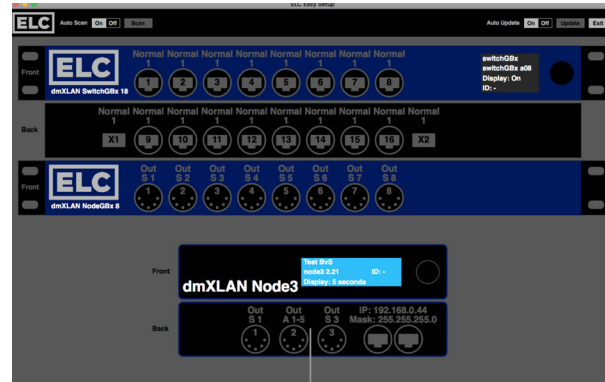
Item Number

- AC612 DIN
- AC612 Editor

ELC Software



DmXLAN
Software



EasySetup
Software

dmXLAN

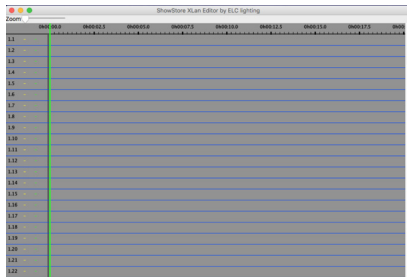
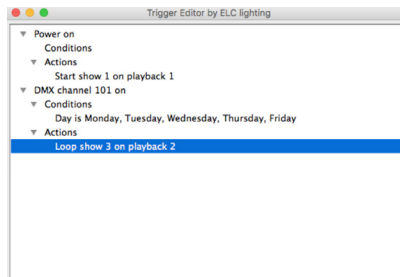
This software can be used to configure all the ELC Nodes and Switches, as well as to monitor the dmXLAN network. Use it also to control and test lighting fixtures connected to the dmXLAN network, independent of the brand of consoles and lighting fixtures used.

The latest dmXLAN network control software, which is available for Windows and Mac OSX, has a completely new look with many improvements, performance enhancements and new features.

Configure all the dmXLAN Node in the network from a single application
Take control over all the connected fixtures, run macros like "Lamp on"
Discover all the connected RDM devices and changer their properties
Monitor all the universes

EasySetup

application is point-and-click software for configuring dmXLAN Nodes and Switches. It provides an easy interface to configure all the devices on the network.

ShowStore
EditorTrigger
Editor

Fixture Library
Editor

With ShowStore Editor you are able to make the perfect loop files for the ShowStore. Put the markers at the right positions to make the show loop seamless from the end to the start again.
Create the seamless loop

With the Trigger Editor provides a nice user interface for programming triggers in a Showstore GBX.

The Fixture Library Editor provides a nice interface to add you own fixtures to the Fixture Library.

You can find various applications to configure and manage the ELC lighting products at **elclighting.com**



NETWORK THAT PERFORM



VISIT US @ elclighting.com

ELC Lighting is designed and manufactured in the Netherlands
Worldwide Sales: Anima Network Ltd Rue le Praz 48 CH-1903 Collonges
Sales@anima.network + 4179 210 4613