


Connecting ELC sideKick to grandma OnPC

To connect the sidekick to the OnPC program you need to run the sideKick2OnPC.exe program.

Also setup to sidelick in the grandma On PC mode.

- Press the right and left button under the display.
- Use The rotary encoder to select the configuration (grandma OnPC)
- Press the Right button under the display (select)

The sideKick2OnPC program will make an icon in the taskbar indicating the connection to the sidekick.

 → connection Ok  → connection Failed

The program sends the data to the OnPC program as artnet DMX data on universe F-F.

Next steps

On the sidekick select the grandma OnPC configuration

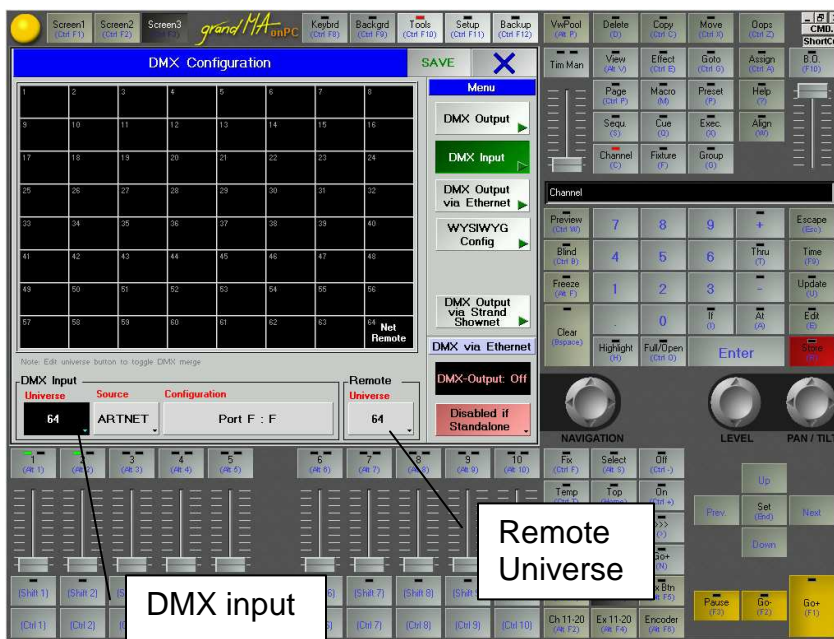
In OnPC

First setup the DMX input to receive from the network.

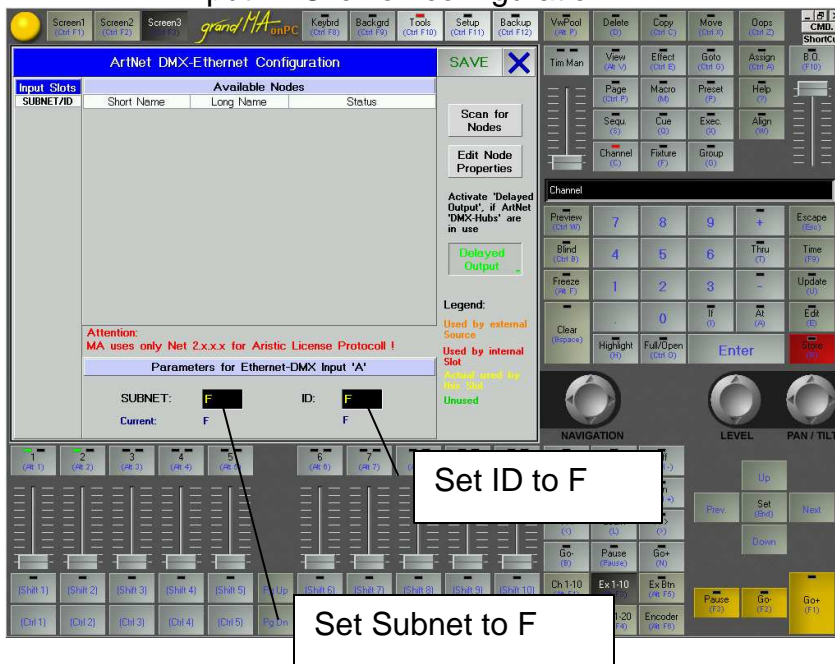
Tools→DMX Configuration

DMX input → Set universe to 64

DMX input → Set source to ARTNET



DMX input → Click on configuration



Set subnet to F
Set ID to F
Click on SAVE

Next setup the DMX input control
Tools → Remote DMX-IN
Switch on
And it should indicate Active



Now you can connect the DMX channels to executer functions as described in the grandma manual

DMX channel layout

Fader 1 – 10 → DMX channel 1-10

Buttons 1-10 (under the fader) → DMX channel 11-20

Buttons 11-20 (direct above the fader) → DMX channel 21-30

Buttons 21-30 (above buttons 11-20) → DMX channel 31-40

Buttons 31-34 (right from the faders) → DMX channel 41-44